



   / cloudcuddlers  
[www.cloudcuddle.com](http://www.cloudcuddle.com)

**Manual CloudCuddle Junior Bedtent**

<b>I. INTRODUCTION</b>	<b>1</b>
A. General Information	1
B. Safety Warnings	1
C. Features	2
D. Usage	2
<b>II. SPECIFICATIONS</b>	<b>3</b>
A. CloudCuddle Parts	3
1. Cover (Tube cover- mesh – mattress cover)	
2. Inflatable Frame (Inside tube cover)	
B. Technical Specifications	4
C. Labelling	4
<b>III. PUMP INSTRUCTIONS</b>	<b>5</b>
A. Pump type	5
B. Pump Parts	5
C. Use	5
<b>IV. INSTALL AND DISMANTLE CLOUDCUDDE</b>	<b>6</b>
A. Install CloudCuddle	6
B. Dismantling CloudCuddle	6
C. Maintenance, Clearing and Storage	7
<b>V. WASHING INSTRUCTIONS</b>	<b>8</b>
A. Thermal disinfection CloudCuddle	8
B. General	8
C. Washing The Sheet	8
D. Washing Complete Cover	9
E. Replace Frame in Cover	9
<b>VI. TIPS AND ADVICES</b>	<b>9</b>
<b>VII. TROUBLESHOOTING</b>	<b>10</b>

## I. INTRODUCTION

### A. General Information

The CloudCuddle Junior is an inflatable ‘bed tent’ which prevents people from falling out of bed or climbing out of bed unintentionally. It quickly transforms a standard 1-person bed + mattress into a safe place to sleep. The CloudCuddle was developed for occasional use and not for permanent use. Parents and carers use the CloudCuddle\* for various purposes:

- Staying with family and friends respitzorg
- Holidays
- Respite care
- Extra sleeping facility institution
- Hospitalisation

The CloudCuddle offers safety and provides a sense of security. The transparent net ensures open communication. The CloudCuddle is resistant to heavy impact, absorbs all blows, and absorbs both the impact and the sound. This manual is fully applicable regardless of the colour of the CloudCuddle.



### B. Safety Warnings

- Read the manual completely before using for the first time.
- Install the CloudCuddle at least 3 hours prior before every use.
- **Rigid frame:** The CloudCuddle must always be well inflated. You will then no longer be able to press the frame. Check this every day. Use the pump supplied by CloudCuddle and Pump 30-35 full strokes until no more air can be added. This way you safely reach the desired pressure (0,45 bar). Never use an electric pump.
- **Bed rails and cot beds:** Never place the CloudCuddle in a cot bed or wedged between bed rails. It must have plenty of room to assume its outer dimensions (200 (l) x 110 (w) x 105 (h)). If a CloudCuddle is sandwiched, too much pressure will be exerted on the seams of the inflatable frame. These can therefore wear out prematurely, causing the frame to tear, after which the air is released under pressure.
- **Clips:** make sure the clips at the top of the inflatable frame are always closed. Only open them when deflating the frame or when you have to add some air.
- **Bedframe:** The base will never be more than 50 cm above the floor. When used in combination with a high-low bed, the bed base must therefore be lowered after care has been provided. The bed frame must weigh at least 20 kg. This prevents the frame, including the CloudCuddle, from toppling over when someone drops their full weight against it. Do you have a lightweight bed frame? If so, place the mattress on the ground.
- **Check cover:** Check all parts of the cover for any defects and- if necessary – have them repaired by us.

- **Zip in sheet:** Always use the CloudCuddle with a zip-in sheet. Without this sheet, one can crawl between the mattress cover and the bed frame.
- **Sharp objects and fire:** Do not place the CloudCuddle next to hard or sharp objects or in the vicinity of fire. Keep sharp objects or toys with sharp edges out of the CloudCuddle.
- **Pets:** Keep pets away from the CloudCuddle in order to prevent damage.
- **Temperature of the CloudCuddle frame:** The CloudCuddle frame must never be exposed to temperatures in excess of 50 degrees Celsius. This risk is particularly present when the CloudCuddle is placed in a car which is exposed to the full sun. The temperature can then rise far above this value.
- **Mattress dimensions:** The CloudCuddle was developed for mattresses of 200 x 90 x 16-26 cm. Do not use any other mattress size.
- **Outer dimensions:** The CloudCuddle must stand freely on a bed and may not be wedged between bed rails or have its height impaired by, for example, a low ceiling.
- **Air mattress:** Do not use the CloudCuddle in combination with an air mattress.
- **Buckles:** All buckles on the straps are closed. Both of the straps are under the mattress, this then straps on the bed frame.
- **Bed frame straps:** The straps which secure CloudCuddle to the bed frame are fully tensioned and cannot slip. When in doubt, we recommend that you place the mattress on the ground with the CloudCuddle around it.
- **Zippers:** All zippers are closed, in both frame cover and the transparent mesh.
- **Runners and pullers of the mesh zipper:** Make sure that the runners are close to each other with the pullers flat against the zip. This way, the zip is inhibited and in principle cannot be opened from the inside.
- **Frame zippers and strings:** The white strings must always be attached and all zippers (8x) must be closed (see p. 6 Fig A and B)
- Never allow anyone to remain unattended outside of the CloudCuddle.
- Please report safety incidents with the CloudCuddle to [info@cloudcuddle.com](mailto:info@cloudcuddle.com).



## C. Features

### Product

- Foldable bed tent

### Conformity

- CE certified: NL-CA002-2020-50424
- Class I medical device
- Unique identifications codes (GTIN):
 

cover:	8719326288895
frame:	8719326288888
sheet:	8719326288871

## D. Usage

### Intended Use

- Soothing and shielding bed protection.

### For whom

- Children and adults who, due to mental and physical limitations, may unintentionally crawl or fall out of bed.
- Weight of up to 50kg.

### To Be Combined with:

- 1-p. size mattress 200x90x16-26 cm, minimum weight 11 kg.
- 1-p. size bed fit for mattresses 200x90x16-26 cm, minimum weight 20kg.
- High-low beds of which:
  - The side partitions can be slid down so that the frame of the CloudCuddle has sufficient space next to the mattress;
  - The back and foot adjusters can be switched off. These may not be used in combination with the CloudCuddle.
  - The height can be adjusted to 50 cm. above the floor.
- On the floor: the CloudCuddle can be used with a mattress on the floor.

### Access to the CloudCuddle:

- The CloudCuddle is symmetrical and can be fully opened from both sides.
- To enter or exit the CloudCuddle, the mesh zips must be fully opened.
- Always close the mesh securely. The runners must sit tightly together with the pullers flat against the zip. This way, the zips are fully locked and cannot be opened from the inside.

### Contraindications:

- Allergy for cotton, polyester and/or poly-eruthan
- Very sensitive skin -> risk of abrasions
- Structurally intense physical activity in which persons constantly fall with their full weight against the sides of the CloudCuddle.

## II. SPECIFICATIONS

### A. CloudCuddle Parts

1. Cover
2. Frame

#### 1. Cover (Tube cover- mesh – mattress cover)

##### 1.1 Tube cover (Protects the inflatable frame)

###### (photo 1)

- a Coloured 'legs'
- b White socks (One with opening for valve)
- c Opening for valve
- d Valve cover (With velcro)
- e Snap fastener (To close the cover on the top) (photo 2)
- f Two zips in different colour: Blue with blue pullers (To open the tube cover) and white zips with silver pullers (To open the mesh).
- g Lashing straps with click buckle for attachment to bed frame (each leg has a lashing strap).

##### 1.2 Transparent Mesh

###### (photo 3)

- h Zipper
- i Pullers (To open the mesh)
- j Transparent mesh (Attached to mattress cover and frame cover)

##### 1.3 Mattress Cover

- k Cover
- l 4 Straps to attach to the mattress (photo 4)
- m Interchangeable sheet (photo 5)

The starting point of the zip is visible on the top side of the sheet. The other puller of the zip is located on the bottom side of the sheet.

#### 2. Inflatable Frame (Inside tube cover)

##### n Inflatable tubes (photo 6)

- o Valve (photo 6, 11)
- p Connection tubes
- q Tube clips:

open: **photo 7**  
closed: **photo 8**

- r 1. Frame zips (8x) (Photo 9 / 10), 2. Frame-strings (2x) (Photo 9). The zips give access to the inner tube. The strings secure the position of the inner tube. The zippers must always be closed, and the strings must be tied.

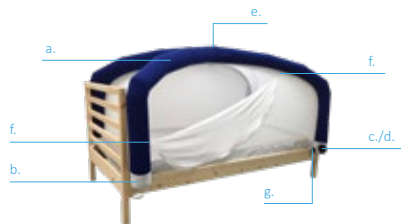


Photo 1



Photo 2

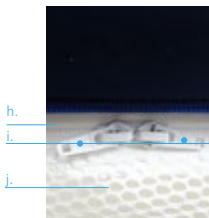


Photo 3

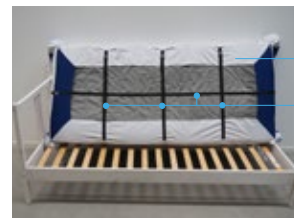


Photo 4



Photo 5



Photo 6

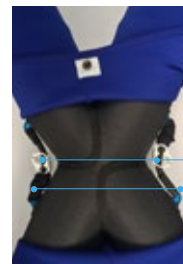


Photo 7

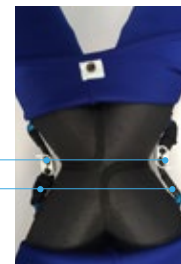


Photo 8





Photo 9



Photo 10

## B. Technical Specifications

- Weight: 5 kg

### Dimensions

- Outer: 200 x 110 x 105cm
- Inner: 200 x 90 x 70cm
- Seat height: 70 cm
- Inthebag: 50 x 40 x 30cm
- Pressure frame: 0,45 bar

### Materials

- Frame: Polyester and polyurethane
- Cover: Polyester
- Sheet: Cotton

## C. Labelling

Symbols Key:

	Manufacturer		Keep dry
	Production date		Read manual before use.
	Catalogue number		Attention!
	Serial number		Medical device
	Do not expose to sunlight		Unique product number
	Maximum weight		

### III. PUMP INSTRUCTIONS

#### A. Pump type

Use the handpump which CloudCuddle can supply (**photo 12**) and pump 30-35 full strokes until you can add no more air. This way you safely reach the desired pressure of 0.45 bar and. Don't use an electric pump.

#### B. Pump Parts

(**photo 12**)

- s Handle
- t Pump-Sleeve
- u Tube
- v Connector Tube- Pump
- w Connector Tube – CloudCuddle Valve

#### C. Use



1. First check whether the clips are open (Under the cover at the intersection of the pipes). (**photo 11**)
2. Connect the tube to the pump at the side marked "INFLATE" (**photo 13**). Attach the other side to the valve with the correct coupling (**photo 14, 15, 16**). The connection piece is available from CloudCuddle.
3. The pressure in the tubes must be 0.45 bar (\*6.5 psi). You have reached this pressure when you can no longer pump the tubes.
-  4. Close the clips at the top of the inflatable frame, at the intersection of the tubes (**photo 11**).
-  5. **Multi-day use:** Do you use the CloudCuddle several days in a row? The pressure in the CloudCuddle may drop slightly due to temperature fluctuations. Check the pressure of the frame regularly. On average, you should add some extra air 1-2 times a week.



Photo 11



Photo 12



Photo 13: upper side: INFLATE- DEFLATE.



Photo 14: Connector Tube Valve.



Photo 15: Open front cap of valve.



Photo 16: Tube with connector attached to valve.

\*psi = Pound per Square Inch

## IV. INSTALL AND DISMANTLE CLOUDCUDDLE

On our website there is a video with instructions: [www.cloudcuddle.com/en/use](http://www.cloudcuddle.com/en/use). The video is for illustration purpose in addition to the manual.

### A. Install CloudCuddle



1. Take the CloudCuddle out of the bag and unroll on the mattress.
2. Open the tube cover and check if the frame zippers are closed (**figure A and B**). Always do this check when the tubes are empty. Never open the frame zippers when the tubes are inflated.
3. Fasten the bottom side (the so-called mattress cover including the fitted sheet) like a fitted sheet around the mattress (**photo 17**). The corners must sit well around the corners of the mattress.
4. Tilt the mattress to attach the straps under the mattress. The straps are provided with click buckles (**photo 18**). Tighten the straps by pulling the loose end (protruding from the snap buckle).
5. Inflate the CloudCuddle according to the inflation instructions (**see p.5**).
6. THIS STEP ONLY APPLIES WHEN USING ON A BED FRAME. Each corner of the CloudCuddle contains a strap with a snap buckle. Attach the straps to the bed frame and click the buckles. Tighten the straps so that they cannot move (**photo 19**).



7. Ensure that the CloudCuddle has enough space to accommodate its outer dimensions (200 (l) x 110 (w) x 105 (h)). If a CloudCuddle is compressed, too much pressure will be exerted on the seams of the frame (**figure C**). These can therefore wear out prematurely, causing the frame to tear, after which the air is released under pressure. The height of 105 cm has been calculated with a mattress that is 16 cm thick. The legs of the CloudCuddle must be able to stand freely next to a 90 cm mattress, on a total width of 110 cm. They then protrude slightly from the bed frame. Do not push them inwards (**figure D**). Do you have a high-low bed with bed rails? Make sure that the side rails are down. There should be no inward protruding elements at the head or foot end of the bed and the distance between head board and foot board should be at least 200 cm.

#### Installation Checks

See safety warnings (**pages 1 and 2**).

### B. Dismantling CloudCuddle

1. Open the buckles and loosen the straps (**photo 20**).
2. Open the snap fastener on top (**photo 21**).
3. Open the clips at the intersection of the tubes (**photo 11**).
4. Open the rear part of the valve (serrated ring) and deflate the CloudCuddle (**photo 22**). Due to the pressure the air will release with a firm pop.



Photo 17: Fit around the mattress.

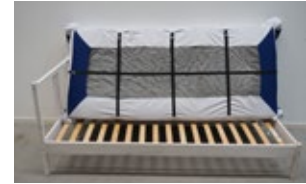


Photo 18: Attach straps underneath mattress.



Photo 19: Attach straps and tighten.



Photo 20: Open buckles and release straps.



Figure A: frame type 1

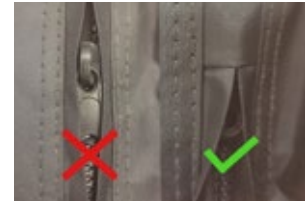


Figure B: frame type 2



Figure C

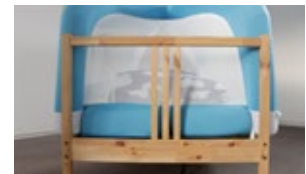


Figure D

5. Loosen the straps underneath the mattress and remove the cover (photo 23).
6. Press as much air as possible out of the tubes by rolling up the CloudCuddle, starting at the end of the legs. Make sure that the leg with the open air valve remains unobstructed, otherwise the air cannot be expelled. If necessary, view the instruction video on the website (under 'product/use').

#### Checks When Dismantling

- You deflate the CloudCuddle by unscrewing the rear valve cap (Round with textured edge). Be aware that the air in the tubes is under pressure and is released with a loud bang when you unscrew the cap.
- Check if the clips on top are open.

### C. Maintenance, Clearing and Storage

#### Maintenance

The CloudCuddle is free of maintenance.

#### Clearing

1. Place mesh and tubes on top with the mattress cover underneath.
2. Put every 'sock' in the adjacent corner of the mattress cover (**photo 24**).
3. Then fold the mattress cover inwards (**photo 25**).
4. Fold both sides lengthwise towards the middle. The mesh and the tubes are now 'wrapped up' in the mattress cover (**photo 26**). This way the CloudCuddle is optimally protected during transport.
5. Roll up the CloudCuddle (tightly) and place it back in the bag (**photo 27**)

#### Storage

- Take care the sheet is clean. If required, you can take the sheet out, wash it and store separately.
- Store the CloudCuddle in a bag and store it in a dry area at room temperature.
- While travelling or in storage: Avoid heavy objects on top of the CloudCuddle.
- **Temperature CloudCuddle frame:** the CloudCuddle frame may never be exposed to temperatures above 50 degrees Celsius. This risk is apparent when it is within a car that is parked in bright sunlight. The temperature can then easily rise above this value.

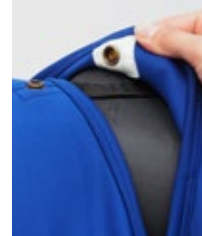


Photo 21: Open snap fastener.



Photo 22: Open rear part of valve and release air.

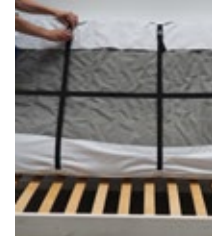


Photo 23: Loosen the straps.



Photo 24: Put each 'white sock' in a corner of the mattress cover.



Photo 25: Tube cover and mesh on top.



Photo 26: Fold 1x lengthways to the center.



Photo 27: Roll up the CloudCuddle.



## V. WASHING INSTRUCTIONS

### A. Thermal disinfection CloudCuddle

- Wash at a temperature of 60°C.
- Use a standard wash programme with spin.
- Do not use shortened wash programmes.

If disinfection is not required, we recommend a lower temperature in order to preserve the fabrics.

### B. General

- Detergent: All detergents which are suitable for the cleaning of clothing and linen is suitable for washing the CloudCuddle cover and sheet.
- The sheet can be unzipped and washed separately.
- The inflatable frame may not be machine-washed.
- The sheet and cover can both be washed at 60 degrees for reasons of hygiene. We recommend a lower temperature to preserve the fabrics.
- Please note that the blue fabrics may transfer colour slightly to the white fabrics. The higher the temperature at which the cover is washed, the more colour will rub off onto the fabric.
- The sheet can be put in the dryer, the rest of the cover cannot be put in the dryer. For durability, it is best to dry the sheet cold or on a clothesline.



### C. Washing The Sheet

Both for unzipping and for zipping in, you do not need to deflate the CloudCuddle or remove it completely from the mattress. It is essential for the safety of the CloudCuddle that all fabrics are as tight as possible. As a result, the CloudCuddle requires some room to maneuver, particularly when zipping in, as described below.

#### Unzipping:

- Make sure there's room to maneuver the CloudCuddle. Loosen the straps which attaches the CloudCuddle to the frame. Then partially slide the CloudCuddle off the mattress (**photo 28**).
- Place your hand between the mattress and the sheet at the bottom of the CloudCuddle. This is where the loop of the sheet zip is located (**photo 29**).
- Pull the zip open until the flap is visible from the top, then unzip the sheet completely from the top.



Photo 28: Partially slide the CloudCuddle off the mattress.



Photo 29: Put hand between mattress and sheet to reach the runner.



Photo 30: Take out the frame.

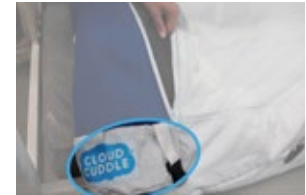


Photo 31: Place tube in bottom part of white sock.



Photo 32: The seam of the tube runs alongside the zipper.

## VI. TIPS AND ADVICES

### Zippering in:

- Ensure that the CloudCuddle has room to maneuver at the corners by loosening the straps at the corners, partially sliding the CloudCuddle off the mattress. You can then make the bend with the zip much easier.
- Then fold the cover around the corner of the mattress at every corner and reattach the tensioning strap.
- Zip up the last section by inserting your hand between the mattress and sheet, just as you did when unzipping.

### D. Washing Complete Cover

1. Dismantle the CloudCuddle as described in [chapter IV](#).
2. Open the cover and take out the frame (**photo 30**).
3. Close all zippers and buckles before putting the cover in the washing machine.
4. As for the sheets, we advise to wash the cover at the lowest possible temperature. If needed you can wash it at 60 degrees. Please note that the blue fabrics may slightly transfer colour to the white fabrics.
5. The CloudCuddle-cover may not be put in the dryer.



### E. Replace Frame in Cover

1. Replace the frame in the cover as soon as it is dry again.
  2. Open the zippers of the tube-cover and replace the tubes one by one in the cover. Start where the valve is. Put the bottom of the tube all the way down into the bottom of the white sock, (**photo 31**) and zip up the cover. Do this successfully for all four legs.
- NB. Make sure the seam of the inflatable tube is against the zip of the tube cover (**photo 32**).

### 1. Before the First Use

- The first time that you install the CloudCuddle, the inflatable frame must still 'set' in the sleeve. It is possible that one of the legs is twisted. If necessary, please adjust this slightly and pull the sleeve tightly around it. If necessary, give the cover some room by releasing some air and then adding it again..
- In order to make the situation more familiar for your child, you can wash the sheet or the entire CloudCuddle cover in advance so that it has a recognizable smell. Remember that you must first remove the inflatable tubes. These should not be machine washed!
- We recommend that you first try out the CloudCuddle for a few nights at home before taking it on holiday.


### 2. Before Each Use

- Always inflate the CloudCuddle three hours prior to each use, to check that it is still in good condition. For example, checking that it will not deflate.
  - Check all fabrics, straps, zips, seams and buckles for damage.
3. Make use of the possibility to test the CloudCuddle in advance. This will provide a good idea of whether it is a suitable aid in your situation.

- Does the CloudCuddle slowly deflate? First check whether the valve has been properly closed. Both the valve ring (rear knurled ring) and the cap may not allow air to pass through.
- Does one of the tubes not inflate during pumping/ deflate during dismantling? First check whether the tube clips (at the intersection of the inflatable tubes) are open.
- Has the netting got stuck in the zipper? Slowly slide the zip upwards and carefully remove the netting from the zip.
- Does the CloudCuddle not fit in the bag? Then try to roll more air out of the tubes. Check whether the tube clips and the valve are open.
- Can the CloudCuddle be opened from the inside? Make sure that the zip runners are close together and that the pullers are flat against the zip. The best position for the pulls is in the middle (**see p.6**).
- Is something damaged or broken? Please contact your reseller as soon as possible.
- Do the CloudCuddle's legs bend when your child lies against the mesh? Then the CloudCuddle is not inflated hard enough. Check the pressure. We recommend a pressure of 0.45 bar. You will then no longer be able to press the tubes.

FITS IN A WEEKEND BAG  
EASY TO TAKE ALONG



© CloudCuddle BV   
CloudCuddle - Laan van Vollenhove 3227 - 3706 AR - Zeist  
info@cloudcuddle.com - www.cloudcuddle.com  
last modified: March 2022

For UK: SpaceSaverBeds  
England&Wales: 01905 347538  
Scotland: 01738 310687  
info@spacesaverbeds.co.uk - www.spacesaverbeds.co.uk

